

Carena Phase 2

A SUBDIVISION BEING A PORTION OF SECTION 1, TOWNSHIP 45 SOUTH, RANGE 25 EAST, CITY OF FORT MYERS, LEE COUNTY, FLORIDA

DESCRIPTION OF LANDS PLATTED

A PARCEL OF LAND LYING WITHIN SECTION 1, TOWNSHIP 45 SOUTH, RANGE 25 EAST, LEE COUNTY, FLORIDA, TOGETHER WITH A PORTION OF THOSE CERTAIN LANDS DESCRIBED AS 130 FOOT WIDE DRAINAGE EASEMENT AND RECORDED IN OFFICIAL RECORDS BOOK 2558, PAGES 2002 THROUGH 2008 (INCLUSIVE) OF THE PUBLIC RECORDS OF LEE COUNTY, FLORIDA AND BEING MORE PARTICULARLY DESCRIBED AS FOLLOWS:

BEGINNING AT SOUTHEASTERLY MOST CORNER OF TRACT "H", PELICAN PRESERVE TRACT L, ACCORDING TO THE PLAT THEREOF RECORDED AS INSTRUMENT NUMBER 200800288553 OF THE PUBLIC RECORDS OF LEE COUNTY, FLORIDA; THENCE NORTH 24°21'42" EAST, ALONG THE EASTERLY BOUNDARY OF SAID TRACT "H", A DISTANCE OF 12.00 FEET; THENCE DEPARTING FROM THE EASTERLY BOUNDARY OF SAID TRACT "H", SOUTH 63°58'18" EAST, A DISTANCE OF 200.91 FEET TO A POINT OF CURVATURE; THENCE EASTERLY, 430.72 FEET ALONG THE ARC OF A CIRCULAR CURVE, CONCAVE NORTHERLY, HAVING A RADIUS OF 1,438.00 FEET, THROUGH A CENTRAL ANGLE OF 17°03'42" AND BEING SUBTENDED BY A CHORD WHICH BEARS SOUTH 74°13'09" EAST, 429.11 FEET TO A POINT OF REVERSE CURVATURE; THENCE EASTERLY, 473.46 FEET ALONG THE ARC OF A CIRCULAR CURVE, CONCAVE SOUTHERLY, HAVING A RADIUS OF 1,062.00 FEET, THROUGH A CENTRAL ANGLE OF 25°32'37" AND BEING SUBTENDED BY A CHORD WHICH BEARS SOUTH 70°01'42" EAST, 469.55 FEET TO A POINT OF REVERSE CURVATURE; THENCE EASTERLY, 53.15 FEET ALONG THE ARC OF A CIRCULAR CURVE, CONCAVE NORTHERLY, HAVING A RADIUS OF 38.00 FEET, THROUGH A CENTRAL ANGLE OF 80°08'02" AND BEING SUBTENDED BY A CHORD WHICH BEARS NORTH 82°40'35" EAST, 48.92 FEET TO A POINT OF REVERSE CURVATURE; THENCE NORTHEASTERLY, 15.11 FEET ALONG THE ARC OF A CIRCULAR CURVE, CONCAVE SOUTHEASTERLY, HAVING A RADIUS OF 1,241.33 FEET, THROUGH A CENTRAL ANGLE OF 00°41'51" AND BEING SUBTENDED BY A CHORD WHICH BEARS NORTH 42°57'30" EAST, 15.11 FEET TO A POINT OF COMPOUND CURVATURE; THENCE NORTHEASTERLY, 29.97 FEET ALONG THE ARC OF A CIRCULAR CURVE, CONCAVE SOUTHEASTERLY, HAVING A RADIUS OF 121.00 FEET, THROUGH A CENTRAL ANGLE OF 14°00'00" AND BEING SUBTENDED BY A CHORD WHICH BEARS NORTH 50°18'25" EAST, 29.49 FEET; THENCE NORTH 57°18'25" EAST, A DISTANCE OF 21.59 FEET TO A POINT OF CURVATURE; THENCE NORTHEASTERLY, 14.08 FEET ALONG THE ARC OF A CIRCULAR CURVE, CONCAVE NORTHWESTERLY, HAVING A RADIUS OF 79.00 FEET, THROUGH A CENTRAL ANGLE OF 101°2'55" AND BEING SUBTENDED BY A CHORD WHICH BEARS NORTH 52°11'57" EAST, 14.07 FEET; THENCE SOUTH 48°36'12" EAST, A DISTANCE OF 64.26 FEET TO A POINT ON A NON-TANGENTIAL CURVE; THENCE SOUTHWESTERLY, 19.27 FEET ALONG THE ARC OF A CIRCULAR CURVE, CONCAVE SOUTHEASTERLY, HAVING A RADIUS OF 79.00 FEET, THROUGH A CENTRAL ANGLE OF 135°8'49" AND BEING SUBTENDED BY A CHORD WHICH BEARS SOUTH 40°17'46" WEST, 19.23 FEET; THENCE SOUTH 33°18'25" WEST, A DISTANCE OF 26.46 FEET TO A POINT OF CURVATURE; THENCE SOUTHWESTERLY, 19.34 FEET ALONG THE ARC OF A CIRCULAR CURVE, CONCAVE NORTHWESTERLY, HAVING A RADIUS OF 121.00 FEET, THROUGH A CENTRAL ANGLE OF 09°09'29" AND BEING SUBTENDED BY A CHORD WHICH BEARS SOUTH 37°53'09" WEST, 19.32 FEET; THENCE SOUTH 42°52'29" WEST, A DISTANCE OF 19.29 FEET TO A POINT ON A NON-TANGENTIAL CURVE; THENCE SOUTHERLY, 13.39 FEET ALONG THE ARC OF A CIRCULAR CURVE, CONCAVE EASTERLY, HAVING A RADIUS OF 13.00 FEET, THROUGH A CENTRAL ANGLE OF 50°59'59" AND BEING SUBTENDED BY A CHORD WHICH BEARS SOUTH 12°46'33" WEST, 12.80 FEET TO A POINT OF REVERSE CURVATURE; THENCE SOUTHERLY, 9.19 FEET ALONG THE ARC OF A CIRCULAR CURVE, CONCAVE WESTERLY, HAVING A RADIUS OF 87.00 FEET, THROUGH A CENTRAL ANGLE OF 06°03'16" AND BEING SUBTENDED BY A CHORD WHICH BEARS SOUTH 13°41'49" EAST, 9.19 FEET TO A POINT OF REVERSE CURVATURE; THENCE SOUTHEASTERLY, 9.30 FEET ALONG THE ARC OF A CIRCULAR CURVE, CONCAVE NORTHEASTERLY, HAVING A RADIUS OF 13.00 FEET, THROUGH A CENTRAL ANGLE OF 40°57'59" AND BEING SUBTENDED BY A CHORD WHICH BEARS SOUTH 37°09'11" EAST, 9.10 FEET; THENCE SOUTH 51°38'10" EAST, A DISTANCE OF 169.83 FEET TO A POINT ON A NON-TANGENTIAL CURVE, THE SAME BEING A POINT ON THE BOUNDARY OF THOSE CERTAIN LANDS DESCRIBED AS 130 FOOT WIDE DRAINAGE EASEMENT AND RECORDED IN OFFICIAL RECORDS BOOK 2558, PAGES 2002 THROUGH 2008 (INCLUSIVE) OF THE PUBLIC RECORDS OF SAID LEE COUNTY, FLORIDA; THENCE RUN THE FOLLOWING EIGHT (8) COURSES ALONG THE BOUNDARY OF LAST SAID LANDS; COURSE NO. 1, SOUTHWESTERLY, 479.84 FEET ALONG THE ARC OF A CIRCULAR CURVE, CONCAVE SOUTHEASTERLY, HAVING A RADIUS OF 1,065.00 FEET, THROUGH A CENTRAL ANGLE OF 25°48'53" AND BEING SUBTENDED BY A CHORD WHICH BEARS SOUTH 25°08'53" WEST, 479.79 FEET; COURSE NO. 2, SOUTH 12°14'28" WEST, 317.86 FEET; COURSE NO. 3, SOUTH 08°59'00" WEST, 107.02 FEET; COURSE NO. 4, SOUTH 26°38'14" WEST, 53.19 FEET; COURSE NO. 5, SOUTH 41°44'23" WEST, 122.30 FEET; COURSE NO. 6, SOUTH 28°58'49" WEST, 338.01 FEET TO A POINT OF CURVATURE; COURSE NO. 7, SOUTHWESTERLY, 290.94 FEET ALONG THE ARC OF A CIRCULAR CURVE, CONCAVE NORTHWESTERLY, HAVING A RADIUS OF 285.00 FEET, THROUGH A CENTRAL ANGLE OF 58°29'26" AND BEING SUBTENDED BY A CHORD WHICH BEARS SOUTH 58°13'32" WEST, 278.47 FEET; COURSE NO. 8, SOUTH 87°28'15" WEST, 86.24 FEET TO A POINT ON A NON-TANGENTIAL CURVE; THENCE DEPARTING FROM LAST SAID LANDS, WESTERLY, 114.48 FEET ALONG THE ARC OF A CIRCULAR CURVE, CONCAVE NORTHERLY, HAVING A RADIUS OF 500.00 FEET, THROUGH A CENTRAL ANGLE OF 130°07'08" AND BEING SUBTENDED BY A CHORD WHICH BEARS SOUTH 83°17'56" WEST, 114.23 FEET; THENCE SOUTH 89°51'30" WEST, A DISTANCE OF 199.48 FEET TO A POINT ON THE BOUNDARY OF SAID LANDS DESCRIBED AS 130 FOOT WIDE DRAINAGE EASEMENT AND RECORDED IN OFFICIAL RECORDS BOOK 2558, PAGES 2002 THROUGH 2008 (INCLUSIVE) OF THE PUBLIC RECORDS OF SAID LEE COUNTY, FLORIDA; THENCE RUN THE FOLLOWING FOUR (4) COURSES ALONG THE BOUNDARY OF LAST SAID LANDS; COURSE NO. 1, SOUTH 87°28'15" WEST, 165.92 FEET TO A POINT OF CURVATURE; COURSE NO. 2, NORTHWESTERLY, 316.04 FEET ALONG THE ARC OF A CIRCULAR CURVE, CONCAVE NORTHEASTERLY, HAVING A RADIUS OF 335.00 FEET, THROUGH A CENTRAL ANGLE OF 64°03'13" AND BEING SUBTENDED BY A CHORD WHICH BEARS NORTH 65°30'08" WEST, 304.45 FEET; COURSE NO. 3, NORTH 38°28'32" WEST, 133.12 FEET TO A POINT OF CURVATURE; COURSE NO. 4, NORTHWESTERLY, 231.18 FEET ALONG THE ARC OF A CIRCULAR CURVE, CONCAVE SOUTHWESTERLY, HAVING A RADIUS OF 765.00 FEET, THROUGH A CENTRAL ANGLE OF 17°18'53" AND BEING SUBTENDED BY A CHORD WHICH BEARS NORTH 47°07'58" WEST, 230.30 FEET TO A POINT ON THE BOUNDARY OF AFORESAID PELICAN PRESERVE TRACT L PLAT; THENCE RUN THE FOLLOWING TEN (10) COURSES ALONG THE BOUNDARY OF SAID PLAT; COURSE NO. 1, NORTH 50°01'40" EAST, 225.60 FEET TO A POINT ON A NON-TANGENTIAL CURVE; COURSE NO. 2, NORTHWESTERLY, 30.69 FEET ALONG THE ARC OF A CIRCULAR CURVE, CONCAVE NORTHEASTERLY, HAVING A RADIUS OF 680.00 FEET, THROUGH A CENTRAL ANGLE OF 02°35'09" AND BEING SUBTENDED BY A CHORD WHICH BEARS NORTH 38°40'45" WEST, 30.69 FEET; COURSE NO. 3, NORTH 52°36'49" EAST, 150.00 FEET TO A POINT ON A NON-TANGENTIAL CURVE; COURSE NO. 4, NORTHERLY, 556.57 FEET ALONG THE ARC OF A CIRCULAR CURVE, CONCAVE EASTERLY, HAVING A RADIUS OF 530.00 FEET, THROUGH A CENTRAL ANGLE OF 80°10'05" AND BEING SUBTENDED BY A CHORD WHICH BEARS NORTH 07°18'08" WEST, 531.35 FEET; COURSE NO. 5, NORTH 22°46'54" EAST, 241.32 FEET TO A POINT ON A NON-TANGENTIAL CURVE; COURSE NO. 6, NORTHERLY, 305.36 FEET ALONG THE ARC OF A CIRCULAR CURVE, CONCAVE WESTERLY, HAVING A RADIUS OF 870.00 FEET, THROUGH A CENTRAL ANGLE OF 20°06'37" AND BEING SUBTENDED BY A CHORD WHICH BEARS NORTH 12°43'36" EAST, 303.80 FEET TO A POINT OF REVERSE CURVATURE; COURSE NO. 7, NORTHERLY, 135.48 FEET ALONG THE ARC OF A CIRCULAR CURVE, CONCAVE EASTERLY, HAVING A RADIUS OF 480.00 FEET, THROUGH A CENTRAL ANGLE OF 16°10'11" AND BEING SUBTENDED BY A CHORD WHICH BEARS NORTH 10°45'23" EAST, 135.01 FEET; COURSE NO. 8, NORTH 28°50'05" EAST, 57.64 FEET; COURSE NO. 9, NORTH 19°43'39" EAST, 178.77 FEET; COURSE NO. 10, SOUTH 65°38'18" EAST, 128.84 FEET TO THE POINT OF BEGINNING.

CONTAINING 2,530,135 SQUARE FEET OR 58.084 ACRES, MORE OR LESS.



APPROVALS: THIS PLAT IS ACCEPTED THIS 22nd DAY OF January 2013 A.D. IN AN OPEN MEETING OF THE CITY COUNCIL OF THE CITY OF FORT MYERS, FLORIDA.

Randall P. Henderson, Mayor; Nancy J. Heberle, Deputy City Clerk; William P. Mitchell, City Manager

CLERK'S CERTIFICATE

I HEREBY CERTIFY THAT THE ATTACHED PLAT OF CARENA PHASE 2, A SUBDIVISION LYING IN SECTION 1, TOWNSHIP 45 SOUTH, RANGE 25 EAST, CITY OF FORT MYERS, LEE COUNTY, FLORIDA, WAS FILED FOR RECORD AT 4:01 P.M., THIS 10th DAY OF February 2013 AND DULY RECORDED AS INSTRUMENT #2013000083160 IN THE PUBLIC RECORDS OF LEE COUNTY, FLORIDA.

Linda Doggett, Clerk of the Circuit Court in and for Lee County

ON BEHALF OF THE CITY OF FORT MYERS I HAVE REVIEWED THE ATTACHED PLAT OF CARENA PHASE 2, LYING IN SECTION 1, TOWNSHIP 45 SOUTH, RANGE 25 EAST, CITY OF FORT MYERS, LEE COUNTY AND FIND THAT IT COMPLIES WITH ALL OF THE REQUIREMENTS OF CHAPTER 177, PART I, FLORIDA STATUTES.

Scott A. Wheeler, Professional Surveyor and Mapper, Florida Certificate No. 5949



VICINITY MAP N.T.S.

NOTICE: THIS PLAT, AS RECORDED IN ITS GRAPHIC FORM, IS THE OFFICIAL DEPICTION OF THE SUBDIVIDED LANDS DESCRIBED HEREIN AND WILL IN NO CIRCUMSTANCES BE SUPPLANTED IN AUTHORITY BY ANY OTHER GRAPHIC OR DIGITAL FORM OF THE PLAT. THERE MAY BE ADDITIONAL RESTRICTIONS THAT ARE NOT RECORDED ON THIS PLAT THAT MAY BE FOUND IN THE PUBLIC RECORDS OF THIS COUNTY.

GATEWAY SERVICES COMMUNITY DEVELOPMENT DISTRICT

THE DISTRICT HEREBY ACKNOWLEDGES ACCEPTANCE OF TRACTS AND EASEMENTS DEDICATED ON THE PLAT TO THE GATEWAY SERVICES COMMUNITY DEVELOPMENT DISTRICT AND DRAINAGE OF ALL LANDS CONTAINED WITHIN THIS PLAT, WITH THE ACCEPTANCE OF DRAINAGE BEING ONLY AFTER FORMAL WRITTEN ACCEPTANCE OF COMPLETED LAKES, DRAINAGE AND SURFACE WATER MANAGEMENT FACILITIES BY THE GATEWAY SERVICES COMMUNITY DEVELOPMENT DISTRICT.

Witnesses as to both: Peter Doughty, Greta Foster

By: Gary Neubauer, Chairman; Peter Altman, Secretary

ACKNOWLEDGMENT

STATE OF FLORIDA COUNTY OF LEE THE FOREGOING ACCEPTANCE WAS ACKNOWLEDGED BEFORE ME THIS 21st DAY OF March 2013 BY GARY NEUBAUER, CHAIRMAN AND Peter Altman, SECRETARY OF GATEWAY SERVICES COMMUNITY DEVELOPMENT DISTRICT, ON BEHALF OF SAID DISTRICT, THEY ARE PERSONALLY KNOWN TO BE OR HAVE PRODUCED AS IDENTIFICATION.

Diane Collins, Notary Public, State of Florida

#EE041197, Commission Number; My Commission Expires: Nov. 09, 2014

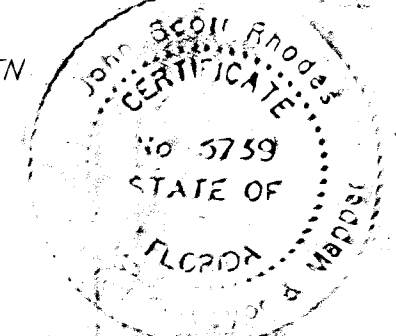
(AFFIX SEAL)

SURVEYOR'S CERTIFICATION

I HEREBY CERTIFY THAT THE ATTACHED PLAT OF CARENA PHASE 2, A SUBDIVISION LYING IN SECTION 1, TOWNSHIP 45 SOUTH, RANGE 25 EAST, CITY OF FORT MYERS, LEE COUNTY, FLORIDA IS A TRUE AND CORRECT REPRESENTATION OF THE HEREIN DESCRIBED LANDS ACCORDING TO A RECENT SURVEY MADE AND PLATTED UNDER MY DIRECTION AND SUPERVISION AND THAT THE SURVEY DATA COMPLIES WITH ALL THE REQUIREMENTS OF CHAPTER 177, PART I, FLORIDA STATUTES.

I FURTHER CERTIFY THAT THE PERMANENT REFERENCE MONUMENTS (P.R.M.'S) HAVE BEEN PLACED AT THE LOCATIONS SHOWN ON THIS PLAT, DONE THIS 22nd DAY OF February 2013.

John Scott Rhodes, Professional Surveyor and Mapper, Florida Certificate No. 5739



DEDICATION:

KNOW ALL MEN BY THESE PRESENTS THAT WCI COMMUNITIES, LLC, A DELAWARE LIMITED LIABILITY COMPANY, QUALIFIED TO DO BUSINESS IN THE STATE OF FLORIDA, THE OWNER OF THE LANDS DESCRIBED HEREIN HAS CAUSED THIS PLAT OF "CARENA PHASE 2" A SUBDIVISION LOCATED IN SECTION 1, TOWNSHIP 45 SOUTH, RANGE 25 EAST, CITY OF FORT MYERS, LEE COUNTY, FLORIDA TO BE MADE AND HEREBY DEDICATES AND RESERVES AS FOLLOWS:

DEDICATES TO THE GATEWAY SERVICES COMMUNITY DEVELOPMENT DISTRICT, ITS SUCCESSORS AND ASSIGNS, ALL THAT PORTION OF THE ROAD RIGHTS-OF-WAY HEREIN REFERRED TO AS TRACTS "R-1" AND "R-2" FOR THE PURPOSES OF ACCESS, INSTALLATION, REPAIR AND MAINTENANCE OF THE ROAD, SUBJECT TO THE DEDICATION OF THE ACCESS EASEMENT (A.E.), DRAINAGE EASEMENT (D.E.) AND PUBLIC UTILITY EASEMENT (P.U.E.) ACROSS, OVER AND UNDER SAID TRACTS "R-1" AND "R-2", TO THE GATEWAY SERVICES COMMUNITY DEVELOPMENT DISTRICT, CITY OF FORT MYERS, ITS SUCCESSORS AND ASSIGNS, PELICAN PRESERVE COMMUNITY ASSOCIATION, INC. AND RESPECTIVE GOVERNMENTAL AGENCIES AND LICENSED PRIVATE AND PUBLIC UTILITIES HAVING AUTHORITY TO PROVIDE FOR SUCH SERVICES FOR THE PURPOSES OF ACCESS, INSTALLATION, REPAIR AND MAINTENANCE OF THEIR RESPECTIVE FACILITIES.

DEDICATES TO THE CITY OF FORT MYERS, LEE COUNTY, AND ALL PROVIDERS OF EMERGENCY SERVICES: A NON-EXCLUSIVE ACCESS EASEMENT (A.E.) ACROSS, OVER AND UNDER THE ROADS AND RIGHTS-OF-WAY AS SHOWN HEREON AS TRACTS "R-1" AND "R-2" FOR INGRESS AND EGRESS OF EMERGENCY VEHICLES AND GOVERNMENTAL SERVICES.

DEDICATES TO THE PELICAN PRESERVE COMMUNITY ASSOCIATION, INC., ITS SUCCESSORS AND ASSIGNS, AND THEIR TENANTS, INVITEES, LICENSEES, MORTGAGEES AND EMPLOYEES, ALL OPEN SPACE TRACTS "O1", "O2", "O3", "O4", "O5" AND "O6", TOGETHER WITH ALL LANDSCAPE BUFFER EASEMENTS (L.B.E.) AND IRRIGATION EASEMENTS (I.E.) HEREBY LABELED, FOR THE PURPOSES OF INSTALLATION, MAINTENANCE AND REPAIR OF LANDSCAPING, IRRIGATION, FENCES AND SIGNS.

DEDICATES TO THE CARENA AT PELICAN PRESERVE PROPERTY OWNERS ASSOCIATION, INC., ITS SUCCESSORS AND ASSIGNS, ALL CARENA PROPERTY OWNERS DRAINAGE EASEMENTS (C.P.D.E.) FOR THE PURPOSES OF ACCESS TO, INSTALLATION, MAINTENANCE AND REPAIR OF ITS DRAINAGE FACILITIES WITHIN SAID DRAINAGE EASEMENTS, WITH RESPONSIBILITY FOR MAINTENANCE.

DEDICATES TO THE GATEWAY SERVICES COMMUNITY DEVELOPMENT DISTRICT, ITS SUCCESSORS AND ASSIGNS, ALL DRAINAGE EASEMENTS (D.E.), TOGETHER WITH A DRAINAGE EASEMENT ACROSS, OVER AND UNDER TRACTS "R-1" AND "R-2" FOR THE PURPOSES OF ACCESS TO, INSTALLATION, MAINTENANCE AND REPAIR OF ITS DRAINAGE FACILITIES WITHIN SAID DRAINAGE EASEMENTS AND LAKE MAINTENANCE EASEMENTS (L.M.E.), WITH RESPONSIBILITY FOR MAINTENANCE BY THE GATEWAY SERVICES COMMUNITY DEVELOPMENT DISTRICT ONLY AFTER FORMAL WRITTEN ACCEPTANCE BY THE GATEWAY SERVICES COMMUNITY DEVELOPMENT DISTRICT OF COMPLETED LAKES, DRAINAGE AND SURFACE WATER MANAGEMENT FACILITIES, WITH NO RESPONSIBILITY FOR MAINTENANCE OF THE SURFACE EASEMENT AREA.

DEDICATES TO THE GATEWAY SERVICES COMMUNITY DEVELOPMENT DISTRICT, ITS SUCCESSORS AND ASSIGNS, TRACTS "L1", "L2", "L3", "W1" AND "W2" AND ALL LAKE MAINTENANCE EASEMENTS (L.M.E.), LABELED HEREIN FOR THE PURPOSES OF WATER MANAGEMENT AND LAKE MAINTENANCE, WITH RESPONSIBILITY FOR MAINTENANCE BY THE GATEWAY SERVICES COMMUNITY DEVELOPMENT DISTRICT ONLY AFTER FORMAL WRITTEN ACCEPTANCE BY THE GATEWAY SERVICES COMMUNITY DEVELOPMENT DISTRICT OF COMPLETED LAKES, DRAINAGE AND SURFACE WATER MANAGEMENT FACILITIES.

DEDICATES TO THE GATEWAY SERVICES COMMUNITY DEVELOPMENT DISTRICT, THE PELICAN PRESERVE COMMUNITY ASSOCIATION, CITY OF FORT MYERS, ITS SUCCESSORS AND ASSIGNS, AND TO THE RESPECTIVE GOVERNMENTAL AGENCIES AND LICENSED PRIVATE UTILITIES HAVING THE AUTHORITY TO PROVIDE FOR SUCH SERVICES ALL EASEMENTS HEREIN LABELED PUBLIC UTILITY EASEMENTS (P.U.E.), TOGETHER WITH A PUBLIC UTILITY EASEMENT ACROSS, OVER AND UNDER TRACTS "R-1", "R-2", AND "R-3" FOR THE PURPOSES OF INSTALLATION, REPAIR, MAINTENANCE AND OPERATION OF THEIR RESPECTIVE UTILITIES FOR WHICH THEY HAVE THE AUTHORITY TO PROVIDE, INCLUDING BUT NOT LIMITED TO WATER, SEWER, IRRIGATION, STREET LIGHT, ELECTRIC, GAS, CABLE TELEVISION AND TELEPHONE, HOWEVER, NO SUCH CONSTRUCTION, INSTALLATION, MAINTENANCE, AND OPERATION OF CABLE TELEVISION SERVICES SHALL INTERFERE WITH THE FACILITIES AND SERVICES OF AN ELECTRIC, TELEPHONE, GAS, OR OTHER PUBLIC UTILITY. IN THE EVENT A CABLE TELEVISION COMPANY DAMAGES THE FACILITIES OF A PUBLIC UTILITY, IT SHALL BE SOLELY RESPONSIBLE FOR THE DAMAGES.

IN WITNESS WHEREOF, WCI COMMUNITIES, LLC, A DELAWARE LIMITED LIABILITY COMPANY, QUALIFIED TO DO BUSINESS IN THE STATE OF FLORIDA, HAS CAUSED THESE PRESENTS TO BE MADE AND SIGNED IN ITS NAME, BY ITS VICE PRESIDENT AND ATTESTED TO BY ITS SECRETARY THIS 23rd DAY OF February 2013 A.D.

Ledia Metaj, LEGIA META J, Sheelby L Melendez, Shelby L Melendez, Ledia Metaj, LEGIA META J

WCI COMMUNITIES, LLC A DELAWARE LIMITED LIABILITY COMPANY; Paul Erhardt, Sr. Vice President; Vivien Hastings, Secretary

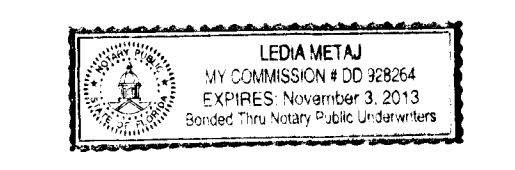
ACKNOWLEDGMENT

STATE OF FLORIDA COUNTY OF LEE THE FOREGOING DEDICATION WAS ACKNOWLEDGED BEFORE ME THIS 25th DAY OF February 2013, BY PAUL ERHARDT, SR. VICE PRESIDENT AND VIVIEN HASTINGS, SECRETARY OF WCI COMMUNITIES, LLC, A DELAWARE LIMITED LIABILITY COMPANY, QUALIFIED TO DO BUSINESS IN THE STATE OF FLORIDA, ON BEHALF OF THE COMPANY, THEY ARE PERSONALLY KNOWN TO ME TO BE THE PERSONS DESCRIBED IN AND WHO EXECUTED THE FOREGOING DEDICATION AND ACKNOWLEDGED THE EXECUTION THEREOF TO BE THEIR FREE ACT AND DEED AS SUCH OFFICERS FOR THE USES AND PURPOSES THEREIN MENTIONED AND THAT SAID DEDICATION IS THE ACT AND DEED OF SAID COMPANY.

Ledia Metaj, LEGIA META J

#DD928264, Commission Number; My Commission Expires: 11/03/2013

(AFFIX SEAL)



THIS INSTRUMENT PREPARED BY: JOHN SCOTT RHODES, P.S.M. #5739; RHODES & RHODES LAND SURVEYING, INC., 28100 BONITA GRANDE DRIVE, # 107, BONITA SPRINGS, FLORIDA 34135, (239) 405-8166 FAX NO. (239) 405-8163, FLORIDA CERTIFICATE OF AUTHORIZATION NO. LB 6897

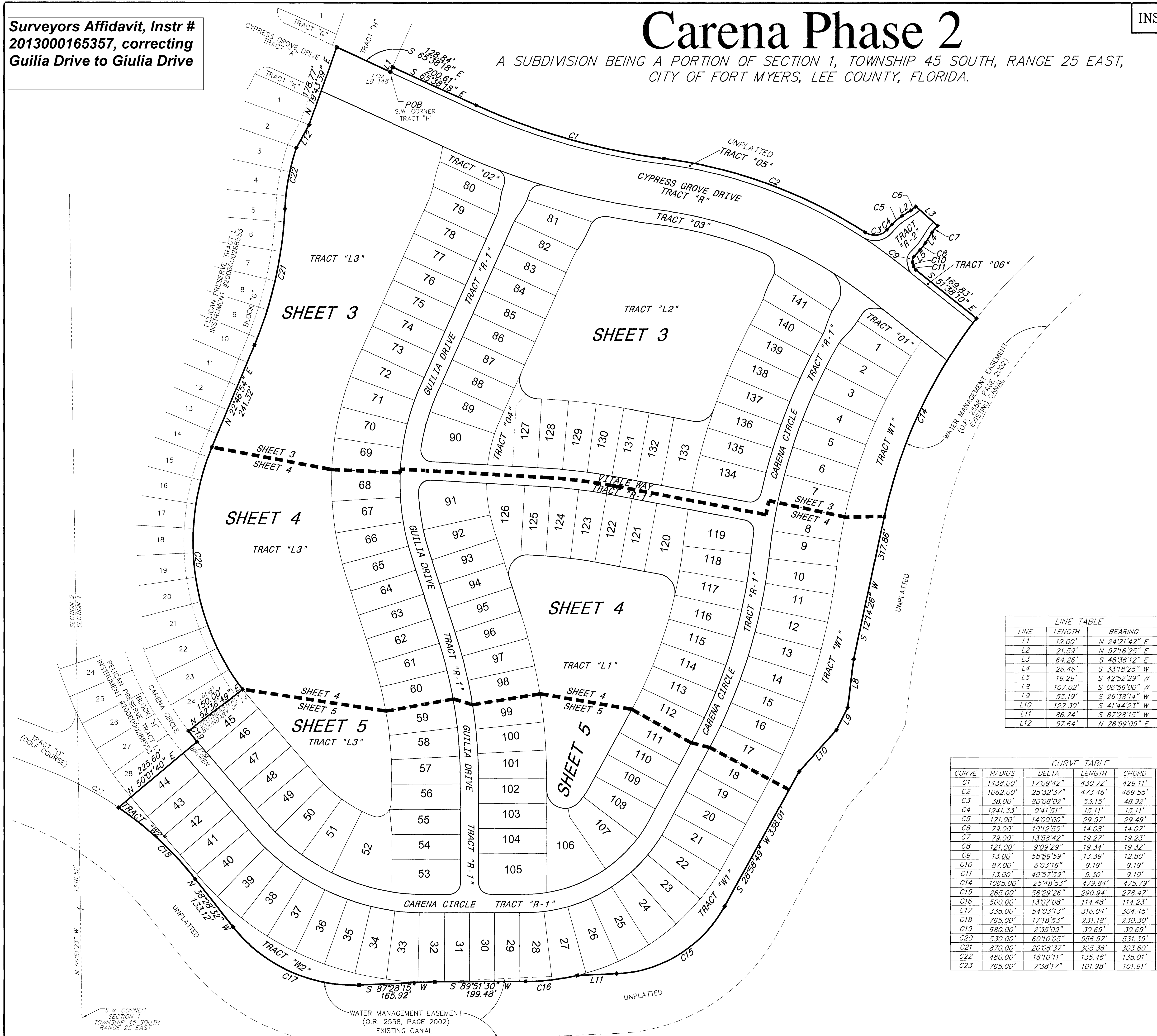
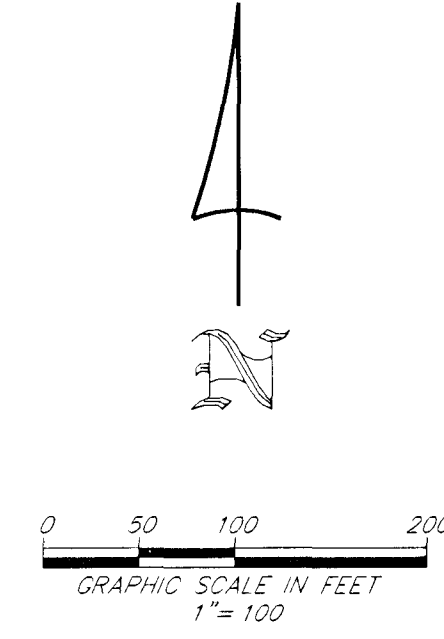
Surveyors Affidavit, Instr # 2013000165357, correcting Giulia Drive to Giulia Drive

Carena Phase 2

A SUBDIVISION BEING A PORTION OF SECTION 1, TOWNSHIP 45 SOUTH, RANGE 25 EAST, CITY OF FORT MYERS, LEE COUNTY, FLORIDA.

INSTRUMENT NUMBER 201300083160

SHEET 2 OF 5
KEYMAP



- LEGEND**
- POB = POINT OF BEGINNING
 - (N.R.) = NON-RADIAL
 - A.E. = ACCESS EASEMENT
 - I.E. = IRRIGATION EASEMENT
 - D.E. = DRAINAGE EASEMENT
 - C.P.D.E. = CARENA PROPERTY OWNERS DRAINAGE EASEMENT
 - (E) = EASEMENT TIE
 - L.M.E. = LAKE MAINTENANCE EASEMENT
 - C.U.E. = COUNTY UTILITY EASEMENT
 - L.B.E. = LANDSCAPE BUFFER EASEMENT
 - O.R. = OFFICIAL RECORDS BOOK
 - P.R.M. = PERMANENT REFERENCE MONUMENT
 - P.U.E. = PUBLIC UTILITY EASEMENT
 - R.O.W. = RIGHT OF WAY
 - S.F. = SQUARE FOOTAGE
 - C1 = CURVE NUMBER
 - L1 = LINE NUMBER
 - FCM = FOUND CONCRETE MONUMENT
 - I.D. = IDENTIFICATION
 - L.B. = LICENSED BUSINESS
 - = SET 5/8" X 18" IRON ROD AND P.R.M. CAP LB 6897 (UNLESS OTHERWISE NOTED)
 - ⊙ = PERMANENT CONTROL POINT-SET P.K. NAIL & BRASS DISK "POP LB6897"
 - = INDICATES POINT OF INTERSECTION, POINT OF CURVATURE, POINT OF TANGENCY OR POINT OF REVERSE CURVATURE.

- NOTES:**
- ALL DIMENSIONS ARE IN FEET AND DECIMALS THEREOF.
 - ALL SIDE LOT LINES ARE RADIAL TO CENTERLINE OF TRACT "R-1" UNLESS OTHERWISE NOTED.
 - ELEVATIONS ARE BASED ON N.G.V.D., 1929 UNLESS NOTED.
 - UNLESS OTHERWISE NOTED ALL CURVES ARE CIRCULAR.
 - BEARINGS ARE BASED ON THE SOUTHEASTERLY BOUNDARY OF LOT 24, BLOCK "G", PELICAN PRESERVE TRACT L, AS BEING NORTH 52°36'49" EAST AND RELATE TO THE STATE PLANE COORDINATE SYSTEM FOR FLORIDA WEST ZONE, NORTH AMERICAN DATUM 1983/90 ADJUSTMENT (NAD83/90).

LINE TABLE

| LINE | LENGTH | BEARING |
|------|---------|---------------|
| L1 | 12.00' | N 24°21'42" E |
| L2 | 21.59' | N 57°18'25" E |
| L3 | 64.26' | S 48°36'12" E |
| L4 | 26.46' | S 33°18'25" W |
| L5 | 19.29' | S 42°52'29" W |
| L8 | 107.02' | S 06°59'00" W |
| L9 | 55.19' | S 26°38'14" W |
| L10 | 122.30' | S 41°44'23" W |
| L11 | 86.24' | S 87°28'15" W |
| L12 | 57.64' | N 28°59'05" E |

CURVE TABLE

| CURVE | RADIUS | DELTA | LENGTH | CHORD | BEARING |
|-------|----------|-----------|---------|---------|---------------|
| C1 | 1438.00' | 17°09'42" | 430.72' | 429.11' | S 74°13'09" E |
| C2 | 1062.00' | 25°32'37" | 473.46' | 469.55' | S 70°01'42" E |
| C3 | 38.00' | 80°08'02" | 53.15' | 48.92' | N 82°40'35" E |
| C4 | 1241.33' | 0°41'51" | 15.11' | 15.11' | N 42°57'30" E |
| C5 | 121.00' | 14°00'00" | 29.57' | 29.49' | N 50°18'25" E |
| C6 | 79.00' | 10°12'55" | 14.08' | 14.07' | N 52°11'52" E |
| C7 | 79.00' | 13°58'42" | 19.27' | 19.23' | S 40°17'46" W |
| C8 | 121.00' | 9°09'29" | 19.34' | 19.32' | S 37°53'09" W |
| C9 | 13.00' | 58°59'59" | 13.39' | 12.80' | S 12°46'33" W |
| C10 | 87.00' | 6°03'16" | 9.19' | 9.19' | S 13°41'49" E |
| C11 | 13.00' | 40°57'59" | 9.30' | 9.10' | S 31°09'11" E |
| C14 | 1093.00' | 23°48'53" | 479.84' | 475.79' | S 25°08'53" W |
| C15 | 283.00' | 58°29'26" | 290.94' | 278.47' | S 59°13'32" W |
| C16 | 500.00' | 13°07'08" | 114.48' | 114.23' | S 83°17'56" W |
| C17 | 335.00' | 54°03'13" | 316.04' | 304.45' | N 69°30'08" W |
| C18 | 763.00' | 17°18'53" | 231.18' | 230.30' | N 47°07'58" W |
| C19 | 680.00' | 1°35'09" | 30.69' | 30.69' | N 39°40'45" W |
| C20 | 530.00' | 60°10'05" | 556.57' | 531.35' | N 07°18'08" W |
| C21 | 870.00' | 2°06'17" | 305.36' | 303.80' | N 12°43'36" E |
| C22 | 480.00' | 16°10'11" | 135.46' | 135.01' | N 10°45'23" E |
| C23 | 765.00' | 7°38'17" | 101.98' | 101.91' | S 59°36'33" E |

THIS INSTRUMENT PREPARED BY:
 JOHN SCOTT RHODES P.S.M. #5739
RHODES & RHODES
 LAND SURVEYING, INC.
 28100 BONITA GRANDE DRIVE, SUITE #107
 BONITA SPRINGS, FLA. 34135
 (239) 405-8166 FAX NO. (239) 405-8163
 FLORIDA BUSINESS LICENSE NO. LB 6897

Carena Phase 2

A SUBDIVISION BEING A PORTION OF SECTION 1, TOWNSHIP 45 SOUTH, RANGE 25 EAST, CITY OF FORT MYERS, LEE COUNTY, FLORIDA

INSTRUMENT NUMBER 2013000083160

SHEET 3 OF 5

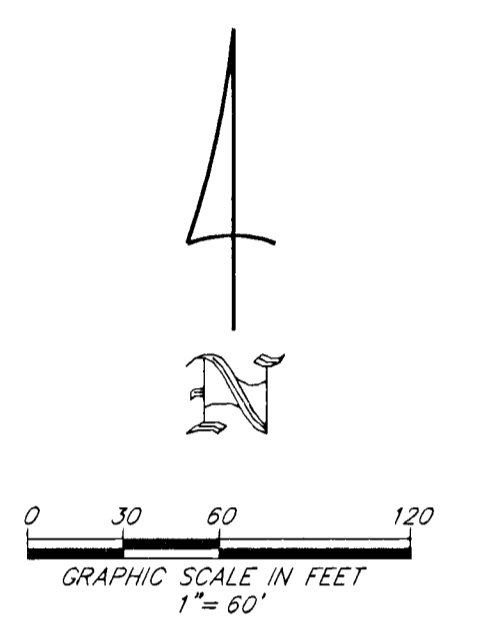
| LINE | LENGTH | BEARING |
|------|---------|---------------|
| L1 | 12.00' | N 24°21'42" E |
| L2 | 21.59' | N 57°18'25" E |
| L3 | 64.26' | S 48°36'12" E |
| L4 | 26.46' | S 33°18'25" W |
| L5 | 21.59' | S 42°52'29" W |
| L6 | 21.59' | N 57°18'25" E |
| L7 | 26.46' | N 33°18'25" E |
| L12 | 67.64' | N 28°59'01" E |
| L13 | 80.40' | N 51°38'10" W |
| L14 | 24.09' | N 63°35'39" W |
| L15 | 9.32' | N 51°38'10" W |
| L16 | 26.46' | N 43°01'03" E |
| L18 | 23.89' | N 09°36'20" E |
| L19 | 9.80' | N 18°36'20" E |
| L20 | 9.74' | N 18°36'20" E |
| L21 | 26.04' | N 33°36'20" E |
| L22 | 21.59' | N 12°01'03" E |
| L26 | 27.03' | N 86°45'36" W |
| L27 | 33.96' | N 11°21'01" E |
| L30 | 17.65' | N 42°52'29" E |
| L31 | 113.10' | N 24°21'42" E |
| L32 | 33.44' | N 40°41'27" E |
| L33 | 34.81' | N 51°38'10" W |
| L34 | 33.65' | N 51°38'10" W |
| L35 | 38.12' | N 18°36'20" E |
| L36 | 50.00' | N 18°36'20" E |
| L37 | 12.00' | N 13°10'43" E |
| L38 | 12.00' | N 13°10'43" E |

| CURVE | RADIUS | DELTA | LENGTH | CHORD | BEARING |
|-------|----------|-----------|---------|---------|---------------|
| C1 | 1438.00' | 1709'42" | 430.72' | 429.11' | S 24°13'09" E |
| C2 | 1062.00' | 25°32'37" | 473.46' | 469.55' | S 20°01'42" E |
| C3 | 38.00' | 80°08'02" | 53.15' | 48.92' | N 82°40'35" E |
| C4 | 1241.33' | 0°41'51" | 15.11' | 15.11' | N 42°32'29" E |
| C5 | 121.00' | 14°00'00" | 29.57' | 29.49' | N 50°18'25" E |
| C6 | 79.00' | 10°14'55" | 14.08' | 14.07' | N 52°11'57" E |
| C7 | 79.00' | 13°59'42" | 19.27' | 19.23' | S 40°17'46" W |
| C8 | 121.00' | 9°02'29" | 19.34' | 19.32' | S 37°53'09" W |
| C9 | 13.00' | 58°59'59" | 13.39' | 12.80' | S 12°46'33" W |
| C10 | 87.00' | 6°03'16" | 9.19' | 9.19' | S 13°41'49" E |
| C11 | 13.00' | 40°57'59" | 9.30' | 9.10' | S 31°02'11" E |
| C12 | 25.00' | 41°50'56" | 18.26' | 17.86' | N 72°33'38" W |
| C13 | 75.00' | 6°53'17" | 9.02' | 9.01' | N 89°57'32" E |
| C14 | 1085.00' | 25°48'53" | 479.84' | 479.79' | S 23°08'53" W |
| C20 | 530.00' | 6°01'02" | 596.57' | 531.36' | N 07°18'08" W |
| C21 | 870.00' | 20°06'37" | 305.36' | 303.60' | N 12°43'56" E |

| CURVE | RADIUS | DELTA | LENGTH | CHORD | BEARING |
|-------|----------|-----------|---------|---------|---------------|
| C22 | 480.00' | 16°10'11" | 135.46' | 135.01' | N 10°45'23" E |
| C24 | 1500.00' | 17°09'42" | 449.29' | 447.61' | N 74°13'09" W |
| C25 | 1500.00' | 5°43'29" | 299.42' | 299.92' | N 77°04'54" W |
| C26 | 1500.00' | 11°26'13" | 343.91' | 343.22' | N 69°02'59" W |
| C27 | 1000.00' | 31°09'50" | 543.91' | 537.23' | N 67°13'05" W |
| C28 | 1000.00' | 29°20'02" | 512.00' | 506.42' | N 69°02'59" W |
| C29 | 1000.00' | 1°49'43" | 31.92' | 31.92' | N 52°13'02" W |
| C30 | 1200.00' | 5°41'28" | 119.19' | 119.14' | N 43°34'32" E |
| C31 | 1200.00' | 29°31'51" | 619.38' | 611.56' | N 21°11'21" E |
| C32 | 500.00' | 42°14'36" | 368.64' | 360.35' | N 03°14'24" E |
| C37 | 500.00' | 21°07'18" | 184.32' | 183.28' | N 07°19'15" W |
| C39 | 500.00' | 21°07'18" | 184.32' | 183.28' | N 13°48'03" E |
| C40 | 300.00' | 5°45'22" | 50.23' | 50.21' | N 12°29'01" E |
| C41 | 1200.00' | 28°22'03" | 551.30' | 528.92' | N 23°18'05" E |
| C42 | 1200.00' | 4°08'28" | 87.08' | 87.06' | N 08°10'20" E |
| C43 | 1200.00' | 7°20'40" | 153.82' | 153.71' | N 83°05'16" W |
| C44 | 25.00' | 59°10'01" | 25.82' | 24.68' | N 63°49'10" E |
| C45 | 148.00' | 17°09'42" | 434.31' | 432.69' | N 74°13'09" W |
| C46 | 1050.00' | 25°32'37" | 468.11' | 464.24' | N 70°01'42" W |
| C47 | 50.00' | 80°08'02" | 69.93' | 64.37' | N 82°40'35" E |
| C48 | 1229.33' | 0°41'51" | 14.96' | 14.96' | N 42°32'29" E |
| C49 | 1120.67' | 11°33'07" | 24.90' | 24.90' | N 33°02'31" E |
| C50 | 109.00' | 10°00'00" | 19.02' | 19.02' | N 38°01'03" E |
| C51 | 91.00' | 13°11'59" | 20.96' | 20.92' | N 36°23'04" E |
| C52 | 1180.00' | 23°23'29" | 481.74' | 478.40' | N 18°02'59" E |
| C61 | 520.00' | 42°14'36" | 383.39' | 374.76' | N 03°14'24" E |
| C62 | 91.00' | 14°45'22" | 23.44' | 23.37' | N 16°59'01" E |

| CURVE | RADIUS | DELTA | LENGTH | CHORD | BEARING |
|-------|----------|------------|---------|---------|---------------|
| C63 | 109.00' | 9°02'00" | 17.12' | 17.10' | N 14°06'20" E |
| C64 | 25.00' | 87°59'36" | 38.19' | 34.73' | N 25°12'28" W |
| C65 | 1550.00' | 1°44'58" | 101.43' | 101.41' | N 67°30'47" W |
| C66 | 950.00' | 2°40'53" | 403.70' | 400.67' | N 70°37'34" W |
| C67 | 1550.00' | 9°22'31" | 255.88' | 255.99' | N 78°04'15" W |
| C68 | 25.00' | 88°03'11" | 38.42' | 34.75' | N 62°17'55" E |
| C69 | 109.00' | 15°00'01" | 28.54' | 28.46' | N 26°06'20" E |
| C70 | 91.00' | 9°14'38" | 14.68' | 14.67' | N 28°59'01" E |
| C71 | 480.00' | 15°28'45" | 129.40' | 129.01' | N 18°38'19" E |
| C72 | 25.00' | 95°40'31" | 41.75' | 37.06' | N 39°55'20" W |
| C73 | 1220.00' | 7°20'40" | 156.38' | 156.28' | N 83°05'16" W |
| C74 | 25.00' | 87°55'43" | 38.37' | 34.71' | N 56°17'12" E |
| C75 | 1220.00' | 17°19'49" | 369.01' | 367.61' | N 21°19'15" E |
| C76 | 91.00' | 10°58'06" | 17.42' | 17.39' | N 24°30'06" E |
| C77 | 109.00' | 14°00'00" | 26.63' | 26.57' | N 26°01'03" E |
| C78 | 1229.33' | 0°41'51" | 12.39' | 12.39' | N 33°18'22" E |
| C79 | 50.00' | 92°02'49" | 80.33' | 71.96' | N 12°28'43" W |
| C89 | 1030.00' | 23°09'17" | 524.11' | 518.46' | N 21°00'14" E |
| C100 | 40.00' | 111°07'18" | 27.58' | 27.58' | N 31°11'57" W |
| C101 | 150.00' | 10°26'52" | 27.35' | 27.31' | N 29°15'08" E |
| C102 | 259.00' | 12°28'52" | 58.42' | 56.31' | N 28°14'08" E |
| C103 | 35.00' | 78°42'43" | 48.08' | 44.39' | N 61°41'03" E |
| C104 | 1982.00' | 3°50'25" | 106.03' | 106.01' | N 80°52'48" W |
| C105 | 918.00' | 15°32'11" | 248.93' | 248.16' | N 75°01'55" W |
| C106 | 35.00' | 98°46'22" | 59.12' | 58.33' | N 18°52'38" W |
| C107 | 259.00' | 10°13'14" | 46.20' | 46.14' | N 24°21'56" E |
| C108 | 200.00' | 9°45'01" | 34.03' | 33.99' | N 24°09'50" E |
| C109 | 1370.00' | 9°53'22" | 236.46' | 236.17' | N 24°05'39" E |
| C110 | 40.00' | 81°26'05" | 56.85' | 52.19' | N 59°52'01" E |
| C111 | 1370.00' | 7°20'40" | 175.61' | 175.49' | N 83°05'16" W |
| C112 | 259.00' | 10°08'53" | 45.87' | 45.81' | N 15°56'08" E |
| C113 | 200.00' | 13°30'00" | 47.12' | 47.02' | N 17°36'41" E |
| C114 | 870.00' | 40°31'00" | 493.88' | 482.87' | N 03°12'14" E |
| C119 | 1120.67' | 0°58'37" | 19.98' | 19.98' | N 33°44'51" E |
| C120 | 1120.67' | 0°14'30" | 4.84' | 4.84' | N 33°08'18" E |
| C121 | 91.00' | 7°49'13" | 12.42' | 12.41' | N 39°06'26" E |

| CURVE | RADIUS | DELTA | LENGTH | CHORD | BEARING |
|-------|----------|-----------|--------|--------|---------------|
| C122 | 91.00' | 5°22'49" | 8.55' | 8.54' | N 32°30'25" E |
| C123 | 1179.99' | 2°36'45" | 53.80' | 53.80' | N 28°30'42" E |
| C124 | 1179.99' | 3°01'37" | 62.34' | 62.33' | N 25°41'51" E |
| C125 | 1179.99' | 3°01'37" | 62.34' | 62.33' | N 22°39'54" E |
| C126 | 1179.99' | 3°01'37" | 62.34' | 62.33' | N 19°38'17" E |
| C127 | 1179.99' | 3°01'37" | 62.34' | 62.33' | N 16°36'40" E |
| C128 | 1179.99' | 3°01'37" | 62.34' | 62.33' | N 13°35'04" E |
| C133 | 520.00' | 5°54'51" | 53.68' | 53.65' | N 08°21'33" E |
| C134 | 520.00' | 5°54'51" | 53.68' | 53.65' | N 11°16'25" E |
| C135 | 520.00' | 5°54'51" | 53.68' | 53.65' | N 17°11'16" E |
| C136 | 520.00' | 4°13'00" | 38.27' | 38.26' | N 22°15'12" E |
| C137 | 91.00' | 2°19'57" | 3.70' | 3.70' | N 23°11'43" E |
| C138 | 91.00' | 12°25'25" | 19.23' | 19.69' | N 15°49'02" E |
| C139 | 109.00' | 6°46'11" | 12.88' | 12.87' | N 12°59'25" E |
| C180 | 109.00' | 2°33'49" | 4.84' | 4.84' | N 17°29'25" E |
| C181 | 109.00' | 2°33'49" | 4.84' | 4.84' | N 20°21'58" E |
| C182 | 109.00' | 11°28'45" | 21.84' | 21.80' | N 22°51'58" E |
| C183 | 91.00' | 3°44'09" | 5.93' | 5.93' | N 31°44'15" E |
| C184 | 91.00' | 5°30'29" | 8.75' | 8.74' | N 27°06'56" E |
| C185 | 480.00' | 5°35'09" | 46.80' | 46.78' | N 21°34'07" E |
| C186 | 480.00' | 9°31'36" | 82.60' | 82.50' | N 13°50'45" E |
| C211 | 1220.00' | 1°47'46" | 38.24' | 38.24' | N 85°51'43" W |
| C212 | 1220.00' | 2°33'40" | 54.53' | 54.53' | N 83°41'00" W |
| C213 | 1220.00' | 2°33'40" | 54.53' | 54.53' | N 81°07'19" W |
| C214 | 1220.00' | 2°33'40" | 54.53' | 54.53' | N 78°37'42" W |
| C215 | 1220.00' | 2°33'40" | 54.53' | 54.53' | N 75°07'56" W |
| C216 | 1220.00' | 2°33'40" | 54.53' | 54.53' | N 71°38'30" W |
| C217 | 1220.00' | 2°33'40" | 54.53' | 54.53' | N 68°08'54" W |
| C218 | 1220.00' | 2°33'40" | 54.53' | 54.53' | N 64°39'18" W |
| C219 | 1220.00' | 2°33'40" | 54.53' | 54.53' | N 61°09'42" W |
| C220 | 1220.00' | 2°33'40" | 54.53' | 54.53' | N 57°39'06" W |
| C221 | 1220.00' | 2°33'40" | 54.53' | 54.53' | N 54°08'30" W |
| C222 | 91.00' | 2°37'49" | 3.65' | 3.65' | N 28°50'15" E |
| C223 | 91.00' | 8°40'17" | 13.77' | 13.76' | N 23°21'12" E |
| C224 | 109.00' | 10°07'37" | 19.27' | 19.24' | N 24°04'52" E |
| C225 | 109.00' | 3°52'23" | 7.37' | 7.37' | N 31°04'52" E |
| C226 | 1030.00' | 3°01'37" | 54.41' | 54.41' | N 31°44'44" E |
| C227 | 1030.00' | 3°01'37" | 54.41' | 54.41' | N 28°43'08" E |
| C228 | 1030.00' | 3°01'37" | 54.41' | 54.41' | N 25°41'51" E |
| C229 | 1030.00' | 3°01'37" | 54.41' | 54.41' | N 22°39'54" E |
| C230 | 1030.00' | 3°01'37" | 54.41' | 54.41' | N 19°38'17" E |
| C231 | 1030.00' | 3°01'37" | 54.41' | 54.41' | N 16°36'40" E |
| C232 | 1030.00' | 3°01'37" | 54.41' | 54.41' | N 13°35'04" E |
| C281 | 870.00' | 5°54'51" | 69.15' | 69.15' | N 08°21'33" E |



| CURVE | RADIUS | DELTA | LENGTH | CHORD | BEARING |
|-------|----------|-----------|---------|---------|---------------|
| C282 | 870.00' | 5°54'51" | 69.16' | 69.13' | N 11°16'25" E |
| C283 | 870.00' | 5°54'51" | 69.16' | 69.13' | N 17°11'16" E |
| C284 | 870.00' | 4°13'00" | 49.31' | 49.30' | N 22°15'12" E |
| C285 | 200.00' | 10°16'18" | 37.02' | 36.97' | N 19°03'32" E |
| C286 | 200.00' | 8°53'42" | 32.11' | 32.06' | N 12°18'32" E |
| C287 | 150.00' | 0°49'37" | 2.17' | 2.17' | N 34°23'45" E |
| C288 | 150.00' | 9°37'15" | 25.19' | 25.16' | N 29°10'19" E |
| C289 | 330.00' | 17°38'49" | 101.64' | 101.24' | N 15°32'17" E |
| C290 | 330.00' | 5°35'09" | 32.17' | 32.16' | N 21°34'07" E |
| C291 | 330.00' | 12°03'40" | 69.47' | 69.34' | N 12°44'42" E |
| C315 | 109.00' | 14°00'00" | 26.63' | 26.57' | N 50°18'25" E |
| C316 | 91.00' | 10°28'06" | 17.42' | 17.39' | N 51°49'22" E |
| C323 | 1370.00' | 1°47'46" | 42.85' | 42.95' | N 85°51'43" W |
| C324 | 1370.00' | 2°33'40" | 61.24' | 61.23' | N 83°41'00" W |
| C325 | 1370.00' | 2°33'40" | 61.24' | 61.13' | N 81°07'19" W |
| C326 | 1370.00' | 0°26'50" | 10.29' | 10.29' | N 79°37'51" W |
| C327 | 1370.00' | 7°43'44" | 184.80' | 184.68' | N 15°17'27" W |

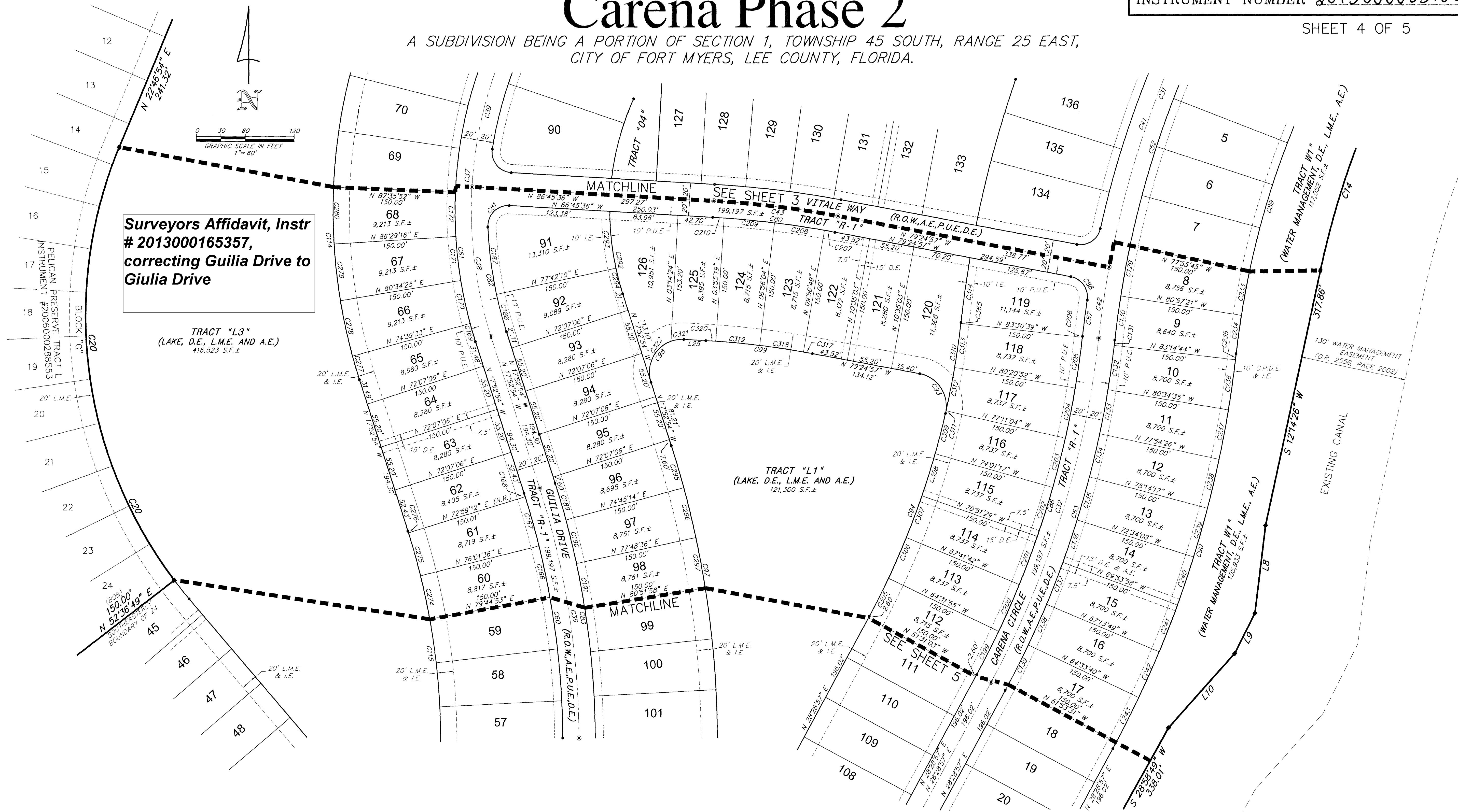
| CURVE | RADIUS | DELTA | LENGTH | CHORD | BEARING |
|-------|---------|-----------|--------|--------|---------------|
| C328 | 91.00' | 1°11'59" | 20.96' | 20.92' | N 59°54'24" E |
| C329 | 109.00' | 10°00'00" | 19.02' | 19.00' | N 38°18'23" E |

Carena Phase 2

A SUBDIVISION BEING A PORTION OF SECTION 1, TOWNSHIP 45 SOUTH, RANGE 25 EAST, CITY OF FORT MYERS, LEE COUNTY, FLORIDA.

INSTRUMENT NUMBER 2013000083160

SHEET 4 OF 5



| CURVE | RADIUS | DELTA | LENGTH | CHORD | BEARING |
|-------|----------|-----------|---------|---------|---------------|
| C14 | 1065.00' | 23°33'16" | 437.82' | 434.75' | S 37°40'04" W |
| C20 | 530.00' | 80°10'05" | 556.57' | 531.35' | N 07°18'08" W |
| C31 | 1200.00' | 28°31'31" | 618.38' | 611.86' | N 21°11'21" E |
| C32 | 1150.00' | 22°03'21" | 442.89' | 439.96' | N 17°27'16" E |
| C36 | 1000.00' | 17°44'25" | 309.62' | 308.39' | N 09°00'42" W |
| C37 | 500.00' | 42°14'38" | 368.84' | 360.35' | N 03°14'24" E |
| C38 | 500.00' | 21°07'18" | 184.32' | 183.28' | N 07°19'15" W |
| C39 | 500.00' | 21°07'18" | 184.32' | 183.28' | N 13°48'03" E |
| C41 | 1200.00' | 25°22'03" | 531.30' | 526.97' | N 23°16'05" E |
| C42 | 1200.00' | 4°09'28" | 87.08' | 87.06' | N 13°35'20" E |
| C43 | 1200.00' | 7°20'40" | 153.82' | 153.71' | N 83°05'16" W |
| C52 | 1180.00' | 23°23'29" | 481.74' | 478.40' | N 08°00'42" E |
| C53 | 1170.00' | 22°03'21" | 450.39' | 447.61' | N 17°27'16" E |
| C60 | 980.00' | 17°44'25" | 303.43' | 302.22' | N 09°00'42" W |
| C61 | 520.00' | 42°14'38" | 383.39' | 374.28' | N 03°14'24" E |
| C80 | 1180.00' | 7°20'40" | 151.26' | 151.15' | N 83°05'16" W |
| C81 | 25.00' | 95°40'33" | 41.75' | 37.06' | N 45°24'07" E |
| C82 | 480.00' | 15°26'45" | 129.40' | 129.01' | N 10°09'32" W |
| C83 | 1020.00' | 17°44'25" | 315.82' | 314.56' | N 09°00'42" W |
| C86 | 1130.00' | 22°03'21" | 434.99' | 432.31' | N 17°27'16" E |
| C87 | 1220.00' | 2°05'11" | 44.42' | 44.42' | N 07°29'11" E |
| C88 | 28.00' | 82°55'43" | 38.77' | 34.71' | N 35°27'05" W |
| C89 | 1030.00' | 23°09'12" | 524.11' | 518.48' | N 21°00'14" E |
| C90 | 1320.00' | 22°03'21" | 508.13' | 505.00' | N 17°27'16" E |
| C93 | 40.00' | 92°24'57" | 64.52' | 57.25' | N 33°12'28" E |
| C94 | 980.00' | 15°28'57" | 264.81' | 264.01' | N 13°43'06" W |
| C97 | 1170.00' | 17°44'25" | 362.26' | 360.81' | N 09°00'42" W |

| CURVE | RADIUS | DELTA | LENGTH | CHORD | BEARING |
|-------|----------|------------|---------|---------|---------------|
| C98 | 40.00' | 111°07'18" | 72.58' | 65.28' | N 37°40'45" E |
| C99 | 1030.00' | 7°20'40" | 132.03' | 131.94' | N 83°05'16" W |
| C114 | 670.00' | 42°14'36" | 493.98' | 482.82' | N 03°14'24" E |
| C115 | 830.00' | 21°51'09" | 316.56' | 314.65' | N 06°57'20" W |
| C129 | 1179.99' | 3°01'37" | 62.34' | 62.33' | N 10°33'27" E |
| C130 | 1179.99' | 2°37'03" | 53.91' | 53.90' | N 07°44'07" E |
| C131 | 1170.00' | 0°19'40" | 6.59' | 6.59' | N 08°15'26" E |
| C132 | 1170.00' | 0°40'09" | 54.51' | 54.50' | N 08°05'20" E |
| C133 | 1170.00' | 2°40'09" | 54.51' | 54.50' | N 10°45'30" E |
| C134 | 1170.00' | 2°40'09" | 54.51' | 54.50' | N 13°25'30" E |
| C135 | 1170.00' | 2°40'09" | 54.51' | 54.50' | N 16°05'48" E |
| C136 | 1170.00' | 2°40'09" | 54.51' | 54.50' | N 18°45'57" E |
| C137 | 1170.00' | 2°40'09" | 54.51' | 54.50' | N 21°26'06" E |
| C138 | 1170.00' | 2°40'09" | 54.51' | 54.50' | N 24°06'15" E |
| C139 | 1170.00' | 2°40'09" | 54.51' | 54.50' | N 26°46'24" E |
| C166 | 980.00' | 3°43'17" | 63.65' | 63.64' | N 12°26'45" W |
| C167 | 980.00' | 3°37'52" | 62.11' | 62.10' | N 15°42'20" E |
| C168 | 980.00' | 0°16'39" | 4.74' | 4.74' | N 17°44'35" W |
| C169 | 520.00' | 2°32'28" | 23.06' | 23.06' | N 16°36'40" W |
| C170 | 520.00' | 5°54'51" | 53.68' | 53.65' | N 12°22'01" W |
| C171 | 520.00' | 5°54'51" | 53.68' | 53.65' | N 06°28'09" W |
| C172 | 520.00' | 5°54'51" | 53.68' | 53.65' | N 00°35'18" W |
| C187 | 480.00' | 9°51'36" | 82.60' | 82.50' | N 07°21'57" W |
| C188 | 480.00' | 5°15'02" | 46.80' | 46.78' | N 15°25'20" W |
| C189 | 1020.00' | 3°38'08" | 46.92' | 46.91' | N 16°33'19" W |
| C190 | 1020.00' | 3°03'22" | 54.41' | 54.40' | N 13°43'06" W |
| C191 | 1020.00' | 3°03'22" | 54.41' | 54.40' | N 10°38'43" W |

| CURVE | RADIUS | DELTA | LENGTH | CHORD | BEARING |
|-------|----------|----------|--------|--------|---------------|
| C199 | 1130.00' | 3°00'52" | 59.45' | 59.44' | N 26°58'31" E |
| C200 | 1130.00' | 3°09'42" | 62.38' | 62.38' | N 83°33'12" E |
| C201 | 1130.00' | 3°09'42" | 62.38' | 62.38' | N 20°33'24" E |
| C202 | 1130.00' | 3°09'42" | 62.38' | 62.38' | N 12°33'37" E |
| C203 | 1130.00' | 3°09'42" | 62.38' | 62.38' | N 14°33'27" E |
| C204 | 1130.00' | 3°09'42" | 62.38' | 62.38' | N 16°33'17" E |
| C205 | 1130.00' | 3°09'42" | 62.38' | 62.38' | N 18°33'07" E |
| C206 | 1130.00' | 0°03'45" | 1.24' | 1.24' | N 08°15'26" E |
| C207 | 1180.00' | 0°38'15" | 13.13' | 13.13' | N 29°44'04" W |
| C208 | 1180.00' | 3°00'45" | 62.04' | 62.03' | N 81°33'34" W |
| C209 | 1180.00' | 3°00'45" | 62.04' | 62.03' | N 84°34'19" W |
| C210 | 1180.00' | 0°40'55" | 14.05' | 14.05' | N 86°25'09" W |
| C233 | 1030.00' | 3°01'37" | 54.41' | 54.41' | N 10°33'27" E |
| C234 | 1030.00' | 2°37'03" | 47.05' | 47.05' | N 07°44'07" E |
| C235 | 1320.00' | 0°19'40" | 7.52' | 7.52' | N 08°15'26" E |
| C236 | 1320.00' | 2°40'09" | 61.49' | 61.49' | N 08°05'20" E |
| C237 | 1320.00' | 2°40'09" | 61.49' | 61.49' | N 10°45'30" E |
| C238 | 1320.00' | 2°40'09" | 61.49' | 61.49' | N 13°25'30" E |
| C239 | 1320.00' | 2°40'09" | 61.49' | 61.49' | N 16°05'48" E |
| C240 | 1320.00' | 2°40'09" | 61.49' | 61.49' | N 18°45'57" E |
| C241 | 1320.00' | 2°40'09" | 61.49' | 61.49' | N 21°26'06" E |
| C242 | 1320.00' | 2°40'09" | 61.49' | 61.49' | N 24°06'15" E |
| C243 | 1320.00' | 2°40'09" | 61.49' | 61.49' | N 26°46'24" E |
| C274 | 830.00' | 3°43'17" | 53.91' | 53.90' | N 12°26'45" W |
| C275 | 830.00' | 3°44'16" | 54.15' | 54.14' | N 15°50'30" W |
| C276 | 830.00' | 0°10'14" | 2.42' | 2.42' | N 17°44'35" W |
| C277 | 670.00' | 2°32'28" | 29.71' | 29.71' | N 16°36'40" W |

| CURVE | RADIUS | DELTA | LENGTH | CHORD | BEARING |
|-------|----------|-----------|---------|---------|---------------|
| C278 | 670.00' | 5°54'51" | 59.16' | 59.13' | N 12°23'01" W |
| C279 | 670.00' | 5°54'51" | 59.16' | 59.13' | N 06°28'09" W |
| C280 | 670.00' | 5°54'51" | 59.16' | 59.13' | N 00°33'18" W |
| C292 | 330.00' | 12°03'50" | 101.64' | 101.24' | N 09°20'30" W |
| C293 | 330.00' | 12°03'40" | 69.42' | 69.34' | N 06°15'55" W |
| C294 | 330.00' | 5°35'09" | 32.17' | 32.16' | N 15°05'20" W |
| C305 | 1170.00' | 0°38'08" | 50.95' | 50.91' | N 14°29'22" E |
| C296 | 1170.00' | 3°03'22" | 62.41' | 62.40' | N 13°43'05" E |
| C297 | 1170.00' | 3°03'22" | 62.41' | 62.40' | N 10°39'43" W |
| C305 | 980.00' | 3°00'52" | 51.56' | 51.55' | N 26°58'31" E |
| C306 | 980.00' | 3°09'42" | 54.10' | 54.10' | N 23°53'12" E |
| C307 | 980.00' | 3°09'42" | 54.10' | 54.10' | N 20°43'24" E |
| C308 | 980.00' | 3°09'42" | 54.10' | 54.10' | N 17°33'37" E |
| C309 | 980.00' | 2°38'43" | 50.95' | 50.91' | N 14°29'22" E |
| C310 | 980.00' | 6°34'24" | 112.43' | 112.37' | N 09°25'48" E |
| C311 | 980.00' | 0°11'04" | 3.16' | 3.16' | N 12°54'28" E |
| C312 | 980.00' | 3°09'42" | 54.10' | 54.10' | N 11°14'02" E |
| C313 | 980.00' | 3°09'42" | 54.10' | 54.10' | N 08°04'15" E |
| C314 | 1370.00' | 3°09'16" | 79.41' | 79.40' | N 08°05'14" E |
| C317 | 1030.00' | 0°38'15" | 11.46' | 11.46' | N 29°44'04" W |
| C318 | 1030.00' | 3°00'45" | 54.15' | 54.15' | N 81°33'34" W |
| C319 | 1030.00' | 3°00'45" | 54.15' | 54.15' | N 84°34'19" W |
| C320 | 1030.00' | 0°40'55" | 12.26' | 12.26' | N 86°25'09" W |
| C321 | 40.00' | 23°04'06" | 51.90' | 51.90' | N 81°42'21" E |
| C322 | 40.00' | 88°03'12" | 61.47' | 55.60' | N 06°28'42" E |
| C365 | 980.00' | 0°03'45" | 1.02' | 1.02' | N 06°27'28" E |

| LINE | LENGTH | BEARING |
|------|---------|---------------|
| LB | 102.02' | S 06°59'00" W |
| L9 | 55.19' | S 26°38'14" W |
| L10 | 122.30' | S 41°44'23" W |
| L25 | 27.03' | N 86°45'36" W |

THIS INSTRUMENT PREPARED BY:
 JOHN SCOTT RHODES P.S.M. #5739
RHODES & RHODES
 LAND SURVEYING, INC.
 28100 BONITA GRANDE DRIVE, SUITE #107
 BONITA SPRINGS, FL. 34135
 (239) 405-8166 FAX NO. (239) 405-8163
 FLORIDA BUSINESS LICENSE NO. LB 6897

Surveyors Affidavit, Instr # 2013000165357, correcting Guilia Drive to Giulia Drive

Carena Phase 2

A SUBDIVISION BEING A PORTION OF SECTION 1, TOWNSHIP 45 SOUTH, RANGE 25 EAST, CITY OF FORT MYERS, LEE COUNTY, FLORIDA.

INSTRUMENT NUMBER 2013000083160

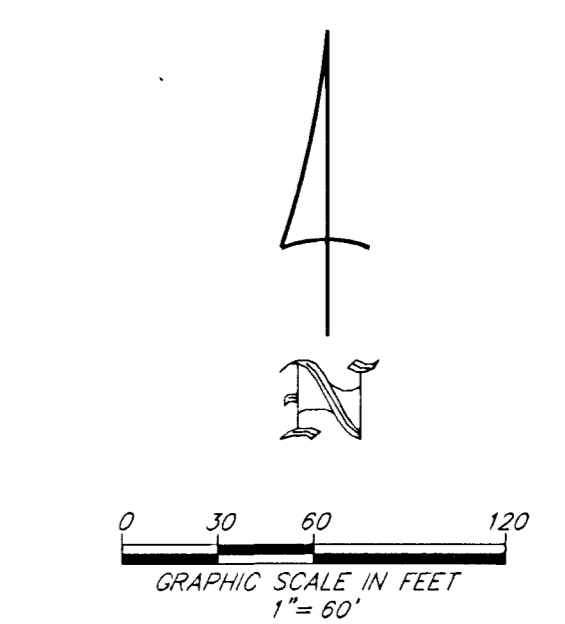
SHEET 5 OF 5

| CURVE | RADIUS | DELTA | LENGTH | CHORD | BEARING |
|-------|----------|-----------|---------|---------|---------------|
| C15 | 285.00' | 58°29'26" | 290.94' | 278.47' | S 58°13'32" W |
| C16 | 500.00' | 130°08' | 114.49' | 114.23' | S 83°17'58" W |
| C17 | 335.00' | 94°31'13" | 316.04' | 304.45' | N 65°10'08" W |
| C18 | 765.00' | 1°18'53" | 231.18' | 230.30' | N 47°07'58" W |
| C19 | 680.00' | 2°35'09" | 30.69' | 30.69' | N 38°40'45" W |
| C20 | 530.00' | 60°10'09" | 556.57' | 531.35' | N 07°18'08" W |
| C32 | 1150.00' | 22°03'21" | 442.69' | 439.96' | N 17°27'16" E |
| C33 | 330.00' | 61°22'34" | 353.50' | 336.84' | N 59°10'13" E |
| C34 | 480.00' | 49°35'45" | 415.49' | 402.84' | N 65°20'37" W |
| C35 | 700.00' | 0°34'09" | 6.99' | 6.99' | N 40°15'40" W |
| C36 | 1000.00' | 1°14'26" | 309.62' | 308.39' | N 09°00'42" W |
| C33 | 1170.00' | 22°03'21" | 450.39' | 447.61' | N 17°27'16" E |
| C54 | 350.00' | 61°22'34" | 374.92' | 357.25' | N 59°10'13" E |
| C55 | 500.00' | 49°35'45" | 432.81' | 419.42' | N 65°20'37" W |
| C56 | 720.00' | 0°34'24" | 7.21' | 7.21' | N 40°15'32" W |
| C57 | 680.00' | 0°34'25" | 6.81' | 6.81' | N 40°15'32" W |
| C58 | 480.00' | 49°35'45" | 398.18' | 385.87' | N 65°20'37" W |
| C59 | 25.00' | 90°00'00" | 39.27' | 35.36' | N 44°51'50" E |
| C60 | 980.00' | 1°14'26" | 305.43' | 302.92' | N 09°00'42" W |
| C63 | 1020.00' | 1°14'26" | 315.82' | 314.56' | N 09°00'42" W |
| C84 | 25.00' | 90°00'00" | 39.27' | 35.36' | N 44°50'30" W |
| C85 | 310.00' | 61°22'34" | 332.08' | 316.42' | N 59°10'13" E |
| C86 | 1130.00' | 22°03'21" | 434.99' | 432.31' | N 17°27'16" E |
| C90 | 1320.00' | 22°03'21" | 508.13' | 505.00' | N 17°27'16" E |
| C91 | 500.00' | 48°15'28" | 421.12' | 408.79' | N 52°36'40" E |
| C92 | 650.00' | 42°15'44" | 562.85' | 545.25' | N 65°20'37" W |
| C94 | 980.00' | 15°28'57" | 284.81' | 284.01' | N 20°44'28" E |

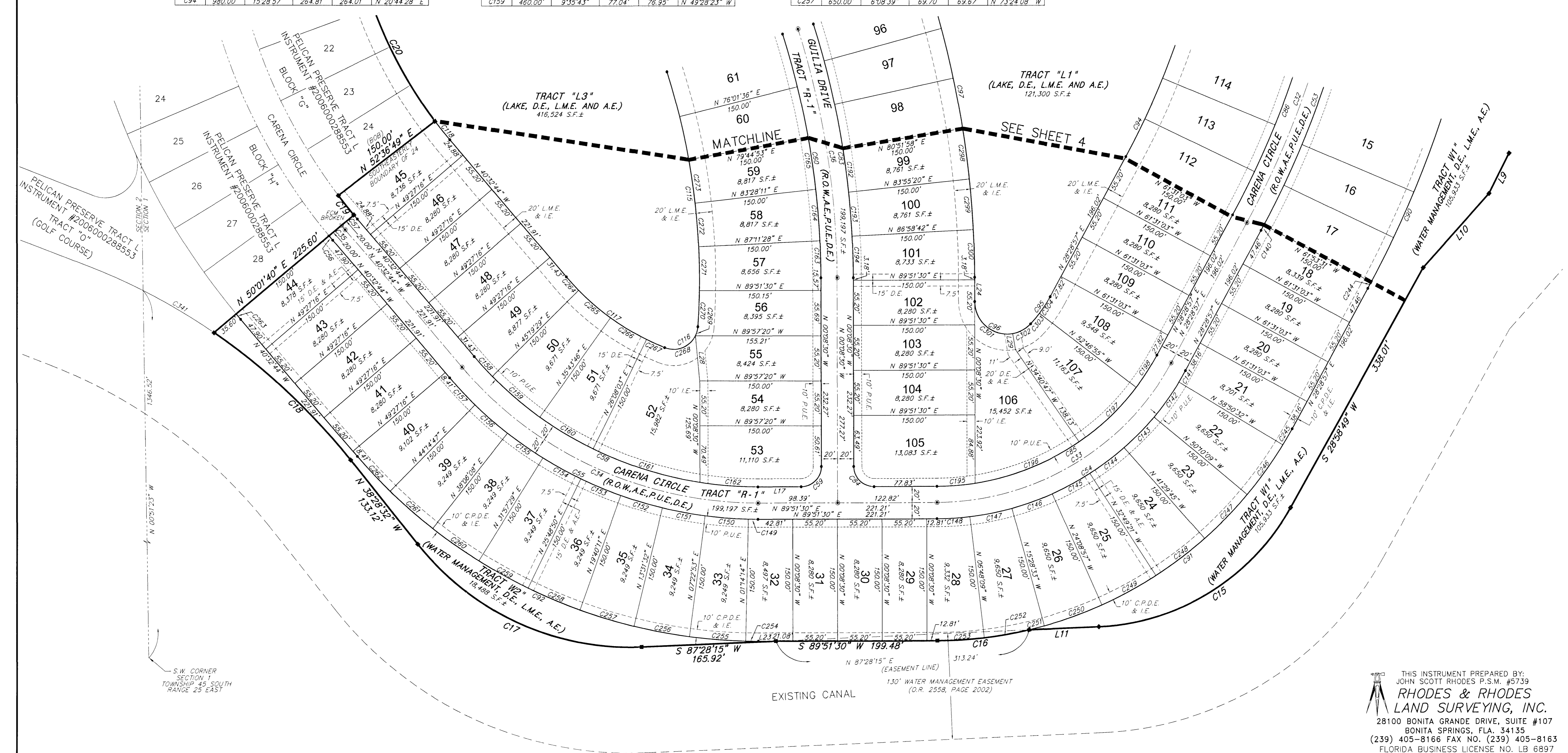
| CURVE | RADIUS | DELTA | LENGTH | CHORD | BEARING |
|-------|----------|------------|---------|---------|---------------|
| C95 | 160.00' | 144°2'10" | 41.29' | 41.18' | N 35°52'31" E |
| C96 | 40.00' | 136°35'24" | 95.36' | 74.33' | N 69°26'12" W |
| C97 | 1170.00' | 1°14'26" | 362.26' | 360.81' | N 09°00'42" W |
| C100 | 30.00' | 21°51'09" | 316.56' | 316.55' | N 06°59'20" W |
| C106 | 30.00' | 107°37'08" | 56.35' | 48.42' | N 57°46'49" E |
| C117 | 310.00' | 27°51'52" | 150.76' | 149.28' | N 54°28'41" W |
| C118 | 530.00' | 3°09'34" | 29.23' | 29.22' | N 38°57'58" W |
| C140 | 1170.00' | 0°22'28" | 7.64' | 7.64' | N 28°17'43" W |
| C141 | 350.00' | 2°40'31" | 16.34' | 16.34' | N 29°49'12" E |
| C142 | 350.00' | 8°40'24" | 52.98' | 52.93' | N 35°29'39" E |
| C143 | 350.00' | 8°40'24" | 52.98' | 52.93' | N 44°10'03" E |
| C144 | 350.00' | 8°40'24" | 52.98' | 52.93' | N 52°50'47" E |
| C145 | 350.00' | 8°40'24" | 52.98' | 52.93' | N 61°30'51" E |
| C146 | 350.00' | 8°40'24" | 52.98' | 52.93' | N 70°11'15" E |
| C147 | 350.00' | 8°40'24" | 52.98' | 52.93' | N 78°51'39" E |
| C148 | 350.00' | 6°39'40" | 40.69' | 40.67' | N 86°31'40" W |
| C149 | 500.00' | 122°44" | 12.03' | 12.03' | N 89°27'08" W |
| C150 | 500.00' | 6°08'39" | 53.62' | 53.59' | N 85°41'28" W |
| C151 | 500.00' | 6°08'39" | 53.62' | 53.59' | N 73°50'47" E |
| C152 | 500.00' | 6°08'39" | 53.62' | 53.59' | N 71°24'08" W |
| C153 | 500.00' | 6°08'39" | 53.62' | 53.59' | N 67°15'29" W |
| C154 | 500.00' | 6°08'39" | 53.62' | 53.59' | N 61°06'50" W |
| C155 | 500.00' | 6°08'39" | 53.62' | 53.59' | N 56°31'40" W |
| C156 | 500.00' | 6°08'39" | 53.62' | 53.59' | N 48°49'32" W |
| C157 | 500.00' | 5°12'29" | 49.45' | 49.43' | N 43°08'59" W |
| C158 | 480.00' | 4°07'47" | 33.16' | 33.15' | N 42°36'39" W |
| C159 | 480.00' | 9°35'43" | 77.04' | 76.95' | N 49°28'23" W |

| CURVE | RADIUS | DELTA | LENGTH | CHORD | BEARING |
|-------|----------|-----------|---------|---------|---------------|
| C160 | 480.00' | 9°35'43" | 77.04' | 76.95' | N 59°04'05" W |
| C161 | 480.00' | 17°19'11" | 139.05' | 138.52' | N 72°31'32" W |
| C162 | 480.00' | 8°57'22" | 71.90' | 71.83' | N 85°39'49" W |
| C163 | 980.00' | 2°40'02" | 45.62' | 45.62' | N 04°20'11" W |
| C164 | 980.00' | 3°43'17" | 63.65' | 63.64' | N 08°23'28" W |
| C165 | 980.00' | 3°43'17" | 63.65' | 63.64' | N 08°23'28" W |
| C192 | 1020.00' | 3°03'22" | 54.41' | 54.40' | N 07°36'59" W |
| C193 | 1020.00' | 3°03'22" | 54.41' | 54.40' | N 04°32'59" W |
| C194 | 1020.00' | 2°52'48" | 51.27' | 51.27' | N 01°34'54" W |
| C195 | 310.00' | 8°45'11" | 47.36' | 47.31' | N 85°28'55" E |
| C196 | 310.00' | 23°47'06" | 139.91' | 138.34' | N 68°12'46" E |
| C197 | 310.00' | 18°08'09" | 97.94' | 97.54' | N 46°16'09" E |
| C198 | 310.00' | 8°44'08" | 47.26' | 47.22' | N 32°51'01" E |
| C244 | 1320.00' | 0°22'28" | 8.62' | 8.62' | N 28°17'43" E |
| C245 | 500.00' | 2°40'31" | 23.35' | 23.34' | N 29°49'12" E |
| C246 | 500.00' | 8°40'24" | 75.69' | 75.62' | N 35°29'39" E |
| C247 | 500.00' | 8°40'24" | 75.69' | 75.62' | N 44°10'03" E |
| C248 | 500.00' | 8°40'24" | 75.69' | 75.62' | N 52°50'47" E |
| C249 | 500.00' | 8°40'24" | 75.69' | 75.62' | N 61°30'51" E |
| C250 | 500.00' | 8°40'24" | 75.69' | 75.62' | N 70°11'15" E |
| C251 | 500.00' | 2°12'56" | 19.33' | 19.33' | N 67°15'29" E |
| C252 | 500.00' | 6°27'28" | 56.35' | 56.32' | N 79°50'47" E |
| C253 | 500.00' | 6°39'40" | 58.13' | 58.10' | N 86°31'40" E |
| C254 | 650.00' | 122°44" | 15.64' | 15.64' | N 89°27'08" W |
| C255 | 650.00' | 6°08'39" | 69.70' | 69.67' | N 85°41'28" W |
| C256 | 650.00' | 6°08'39" | 69.70' | 69.67' | N 73°50'47" W |
| C257 | 650.00' | 6°08'39" | 69.70' | 69.67' | N 71°24'08" W |

| CURVE | RADIUS | DELTA | LENGTH | CHORD | BEARING |
|-------|----------|-----------|---------|---------|---------------|
| C258 | 650.00' | 6°08'39" | 69.70' | 69.67' | N 87°15'29" W |
| C259 | 650.00' | 6°08'39" | 69.70' | 69.67' | N 61°06'50" W |
| C260 | 650.00' | 6°08'39" | 69.70' | 69.67' | N 54°58'11" W |
| C261 | 650.00' | 6°08'39" | 69.70' | 69.67' | N 48°49'32" W |
| C262 | 650.00' | 5°12'29" | 59.08' | 59.06' | N 43°08'59" W |
| C263 | 870.00' | 0°34'24" | 8.71' | 8.71' | N 40°15'32" W |
| C264 | 310.00' | 4°07'47" | 22.34' | 22.34' | N 42°36'39" W |
| C265 | 310.00' | 9°35'43" | 51.92' | 51.85' | N 49°28'23" W |
| C266 | 310.00' | 9°35'43" | 51.92' | 51.85' | N 59°04'05" W |
| C267 | 310.00' | 4°12'40" | 24.59' | 24.59' | N 68°08'12" W |
| C268 | 30.00' | 85°13'56" | 44.63' | 40.63' | N 68°58'25" E |
| C269 | 30.00' | 22°23'12" | 11.72' | 11.65' | N 15°09'51" E |
| C270 | 830.00' | 3°02'14" | 44.00' | 43.99' | N 02°27'08" E |
| C271 | 830.00' | 3°44'32" | 54.21' | 54.20' | N 00°56'16" W |
| C272 | 830.00' | 3°43'17" | 53.91' | 53.90' | N 04°40'11" W |
| C273 | 830.00' | 3°43'17" | 53.91' | 53.90' | N 08°23'28" W |
| C298 | 1170.00' | 3°03'22" | 82.41' | 82.40' | N 07°36'59" W |
| C299 | 1170.00' | 3°03'22" | 82.41' | 82.40' | N 04°32'59" W |
| C300 | 1170.00' | 2°52'48" | 58.81' | 58.81' | N 01°34'54" W |
| C301 | 40.00' | 99°51'18" | 69.71' | 61.22' | N 50°04'09" W |
| C302 | 40.00' | 36°44'06" | 25.65' | 25.21' | N 61°38'09" E |
| C303 | 160.00' | 6°03'01" | 16.90' | 16.89' | N 40°14'36" E |
| C304 | 160.00' | 8°44'08" | 24.39' | 24.37' | N 32°51'01" E |
| C341 | 765.00' | 7°38'17" | 101.98' | 101.91' | N 59°36'33" W |



| LINE | LENGTH | BEARING |
|------|---------|---------------|
| L9 | 55.19' | S 26°38'14" W |
| L10 | 182.30' | S 41°44'23" W |
| L11 | 89.24' | S 87°28'15" W |
| L17 | 53.59' | N 89°51'30" E |
| L23 | 21.33' | N 89°51'30" E |
| L24 | 29.74' | N 00°08'30" W |
| L28 | 55.46' | N 05°32'00" W |
| L29 | 20.00' | N 09°59'48" W |



THIS INSTRUMENT PREPARED BY:
 JOHN SCOTT RHODES P.S.M. #5739
RHODES & RHODES
 LAND SURVEYING, INC.
 28100 BONITA GRANDE DRIVE, SUITE #107
 BONITA SPRINGS, FLA. 34135
 (239) 405-8166 FAX NO. (239) 405-8163
 FLORIDA BUSINESS LICENSE NO. LB 6897